

Eaton® Frequency Inverters SVX9000 and SPX9000

Modular, compact and configurable



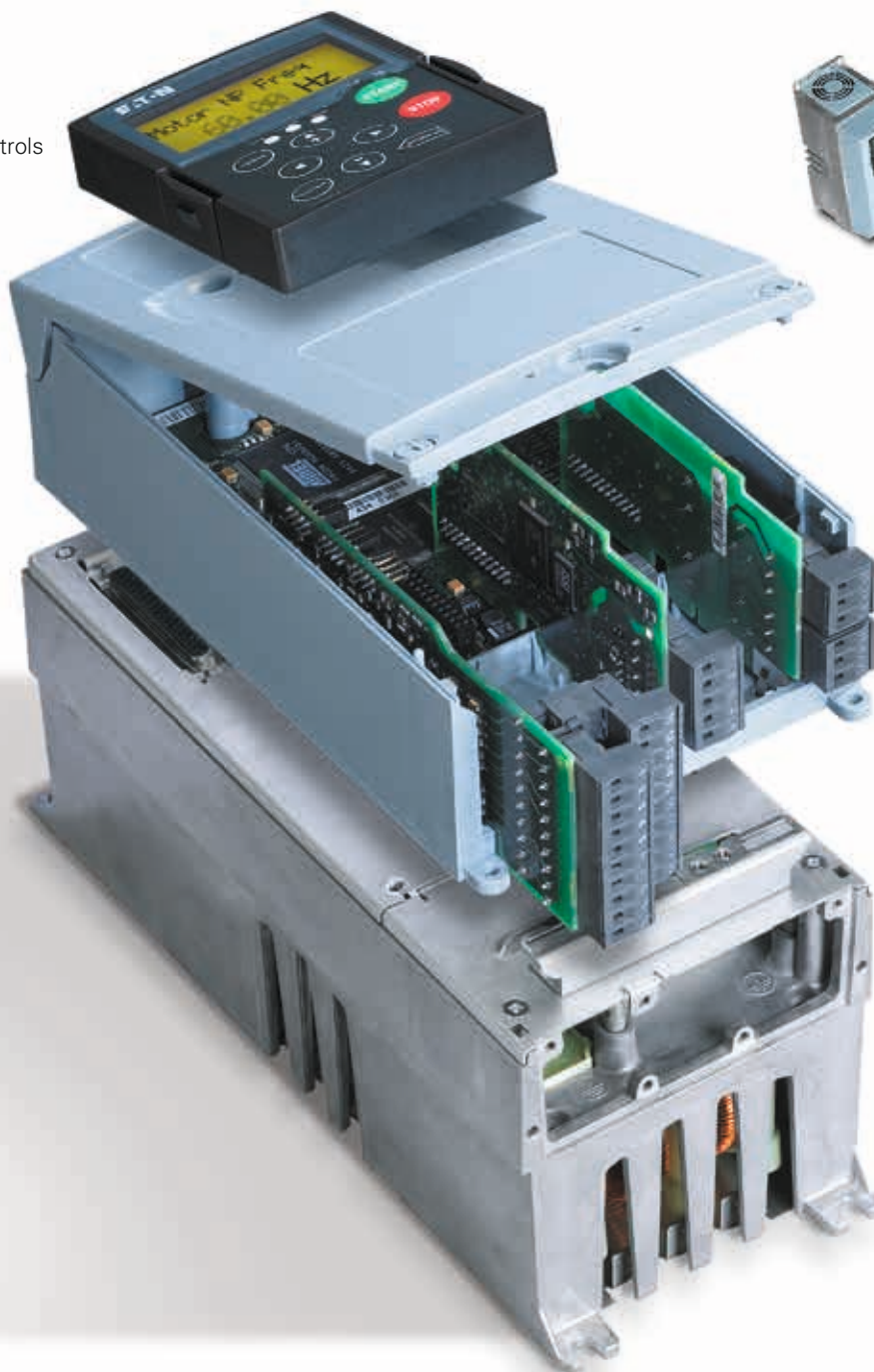
EATON

Powering Business Worldwide



Multiple communication protocols allow connectivity to an extensive range of automation systems.

- Modbus/TCP
- Modbus RTU
- ProfiBus DP
- LonWorks
- Johnson Controls Metasys_ N2
- CANopen
- DeviceNet
- BACnet
- Ethernet/IP



Enclosure style

Available in IP21, IP54 and IP00 modules.



Power module

- 0.55 kW to 1800 kW
- 208–240 V, 380–500 V, 525–690 V
- Semiconductor technology
- Connections via multi-pole connector
- Remote mount with a fibre-optic cable
- Frame sizes 4–6 equipped with a built-in brake chopper as standard

Power unit options:

- Input and output filters
- Brake resistors

Spannungsversorgung

- +10 V DC reference
- +24 V DC auxiliary
- Encoder (+15 V DC/+24 V DC)



Software Tools – Drag and drop configuration. Store and access whenever n

Familiar user interface

Both frequency inverters SPX9000 and SVX9000 utilise a common software platform, start-up wizard and enhanced pre-configured applications to minimise set-up time and allow consistency of programming and commissioning.

Seven built-in applications

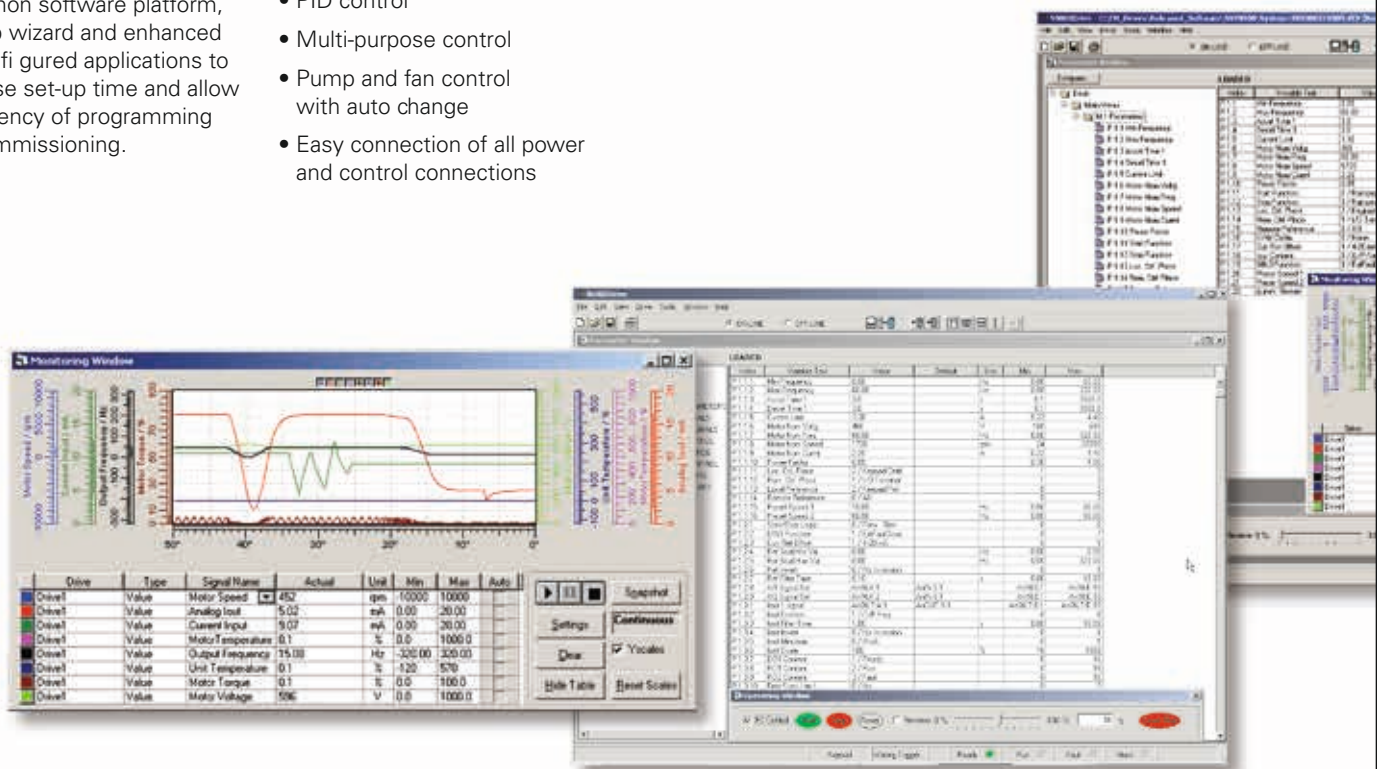
- Basic
- Standard
- Local/remote applications
- Multi step speed control
- PID control
- Multi-purpose control
- Pump and fan control with auto change
- Easy connection of all power and control connections

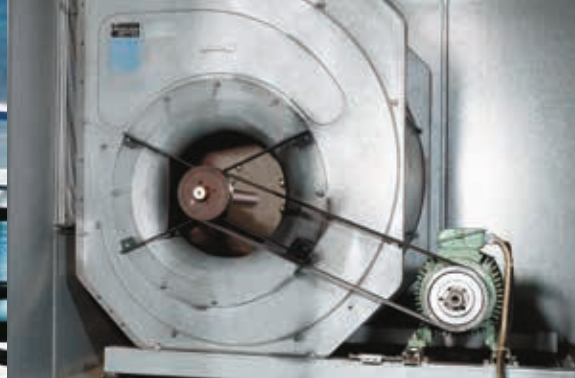
9000XDrive

9000XDrive is a software tool that allows uploading and downloading drive parameters. Parameters can be changed, saved, and uploaded to any number of frequency inverters. The tool has the ability to print parameters or save them to a file for further use and reference. Parameters can be compared to preset values to determine drive setup. Using the user functions it is possible to set references, start and stop the drive, and to monitor signals and actual values. These values can be shown via a graphic display.

9000XEngine

Create IEC 61131-3 compliant custom applications with 9000XEngine. This graphical design tool customizes the control logic and parameters in the frequency inverter. Functional Block Diagram (FBD), Ladder Diagram (LD) and Structured Text (ST) are integrated functionalities. 9000XEngine enables the creation of parameters, fault messages and other application-related features.





eeded

9000XLoad

9000XLoad is an easy-to-use tool for uploading system, application and option card software intended for use by engineering, commissioning and service personnel. 9000XLoad is also suitable for loading custom applications to the frequency inverter.

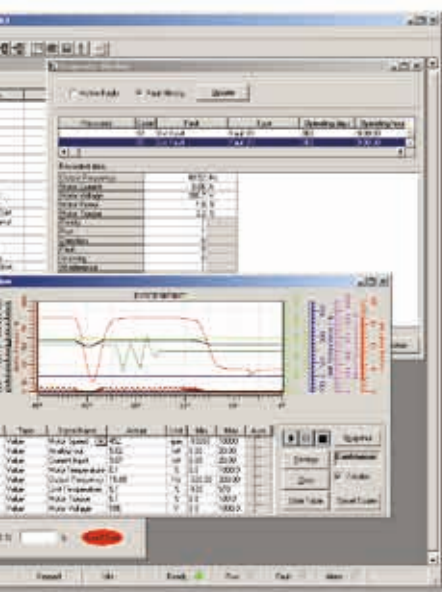
SVX9000 frequency inverters

The SVX9000 can be used for simple and complex applications. Typical applications are, for example, pumps, ventilation systems and belt conveyors. The SVX9000 features integrated help functions that simplify parameterization of the frequency inverter. Enclosures are available with IP21 and IP54 degree of protection.

SPX9000 frequency inverters

The SPX9000 can be used in high power and/or high performance applications. Typical applications requiring high performance are: synchronisation of multi-motor systems, positioning control applications, control and synchronisation of winder systems. The SPX9000 supports fast communication between several frequency inverters. Equipped with superior processing power,

the SPX9000 frequency inverter can utilise an absolute encoder or rotational feedback, to provide precise motor control. Sensorless vector and simple frequency control are selectable by parameter setting. Enclosures are available with IP21, IP54 and IP00 degree of protection.



The SVX9000 Series at a glance:

- Extensive range of power and voltage selections
- Start-up wizard
- Modular design concept
- The communication can be operated via external 24 VDC
- Built-in 3% line reactor
- 30-fault history with status at time of fault
- Easy operation

Rating (kW)	Voltage range	Enclosure
0.55–75	208–240	IP21, IP54
0.75–132	380–500	IP21, IP54
2.2–160	525–690	IP21, IP54

The SPX9000 Series at a glance:

- High performance for demanding applications
- Increased micro-processing power (4 times more CPU capability)
- Encoder feedback
- High-resolution analog inputs
- Speed and torque loop capability
- Customizable software
- Same ease of operation
- Master / Slave capability

Rating (kW)	Voltage range	Enclosure
0.55–75	208–240	IP21, IP54
0.75–1100	380–500	IP21, IP54 and IP00 Module
2.2–1800	525–690	IP21, IP54 and IP00 Module



Display and operating unit.

The display and operating unit offers the user full control over the drive. It provides the ability to view and change parameters, as well as monitor actual running values. Built in upload and download capability makes programming several frequency inverters child's play, cutting installation time. The three-line alphanumeric programmable display with status indicators uses localized text for parameters, status, and diagnostic messages without the use of codes and lookup tables. The display has large, clear characters easily visible in all lighting conditions.



Modular, configurable and compact. Presenting the SVX9000 and SPX9000 Series.



Eaton's frequency drives are the compact, modular solution to variable speed applications. They enable a broad range of new application capabilities. A complete selection of option cards allows you to configure the drive to meet any requirement with its wide voltage range, high overload ability, and userfriendly alphanumeric display and operating unit.

Modular design: Convenient and cost effective.

Just three screws link the control module to the power module. What's more, control units are interchangeable within frame sizes while software, control panels, I/O and communication cards are common throughout the series. Separating the power and control units provides installation advantages and reduced spare parts requirements. The SVX9000 and SPX9000 can be easily converted on-site from degree of protection IP21 to IP54 (sizes 4-6). The reduced dimensions equate to less panel space and easier retrofits.

Quick Start-up Wizard.

Even when unpowered, the frequency inverter lets you program and test the drive. The control logic module can be powered from an external +24 V DC source so you're ready to test and go live whenever needed. Whether you choose local or remote operations via the keypad, simple copy/paste functions streamline the process.

Communication flexibility.

The SVX9000 and SPX9000 may be configured with several different communication protocols, making it easy to communicate with all commonly used control systems. The frequency inverter's powerful microprocessor can be used for local control tasks, thereby freeing resources of

the PLC. 9000XEngine, our versatile block-programming tool, eliminates the necessity for a PLC and significantly simplifies the control system.

Optional I/O: Simplified configuration.

Up to five plug-and-play I/O assemblies, each with unique input and output configurations, can also be installed. Multiple analog and digital input and output combinations, communication protocols and additional application-specific hardware are available.

At Eaton, we are solution-driven, supplying energy to a world that is ever more demanding. With over 100 years of expertise in the area of power management, we are ready for the future. Core industries all around the globe rely on Eaton and on our pioneering products, total solutions and engineering services.

Companies know they can always trust our reliable, efficient, and safe power management solutions. Together with our personalized service and support, as well as our forward-looking attitude, these solutions meet the needs of tomorrow, today. Follow the charge. Visit **eaton.eu**.

Eaton Industries GmbH
Hein-Moeller-Str. 7-11
D-53115 Bonn / Germany

© 2018 Eaton
All rights reserved
W8230-7624en ip 03/18
Printed in Germany (03/18)
Article No.: 144111
March 2018

www.eaton.eu

Eaton is a registered trademark of
Eaton Corporation

All other trademarks are property of their
respective owners.

